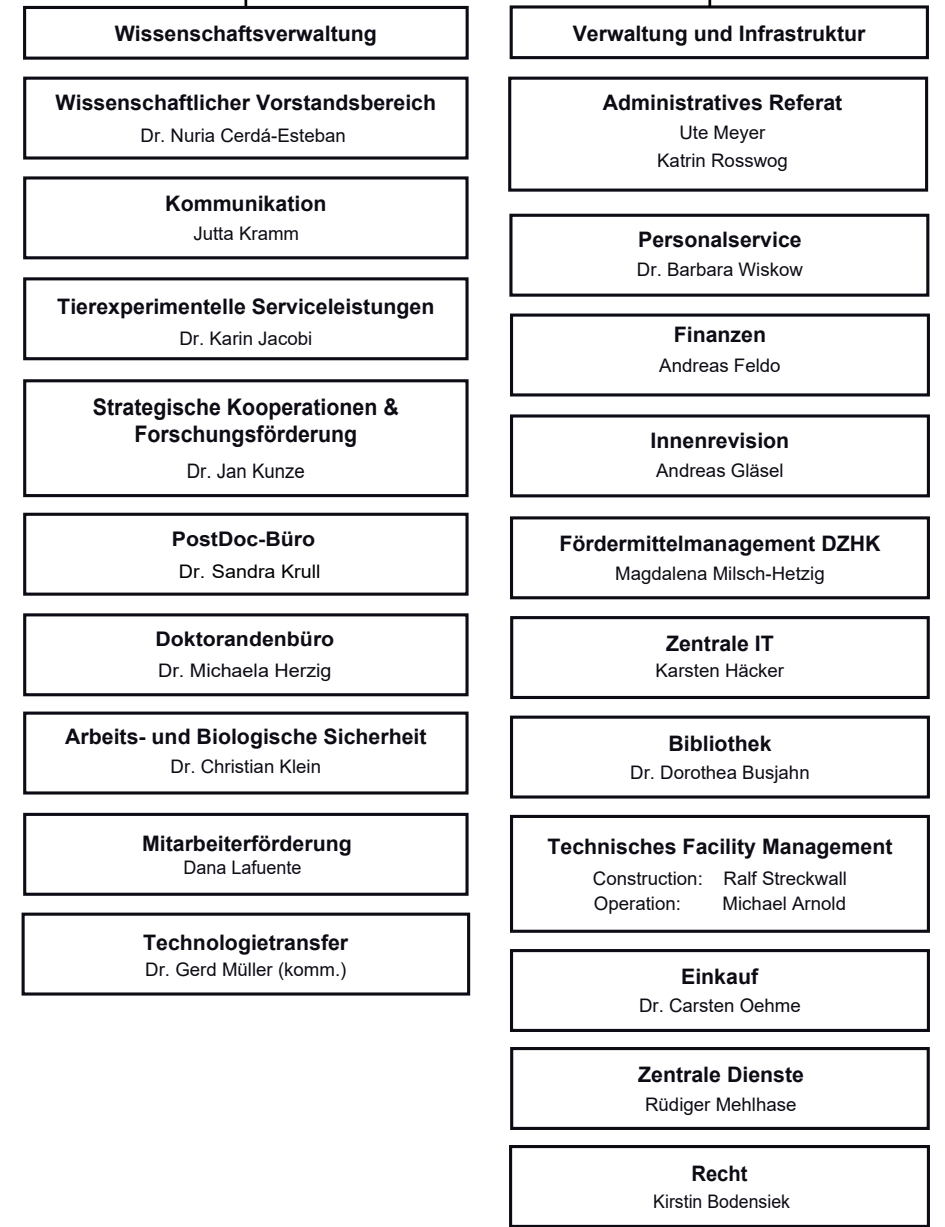
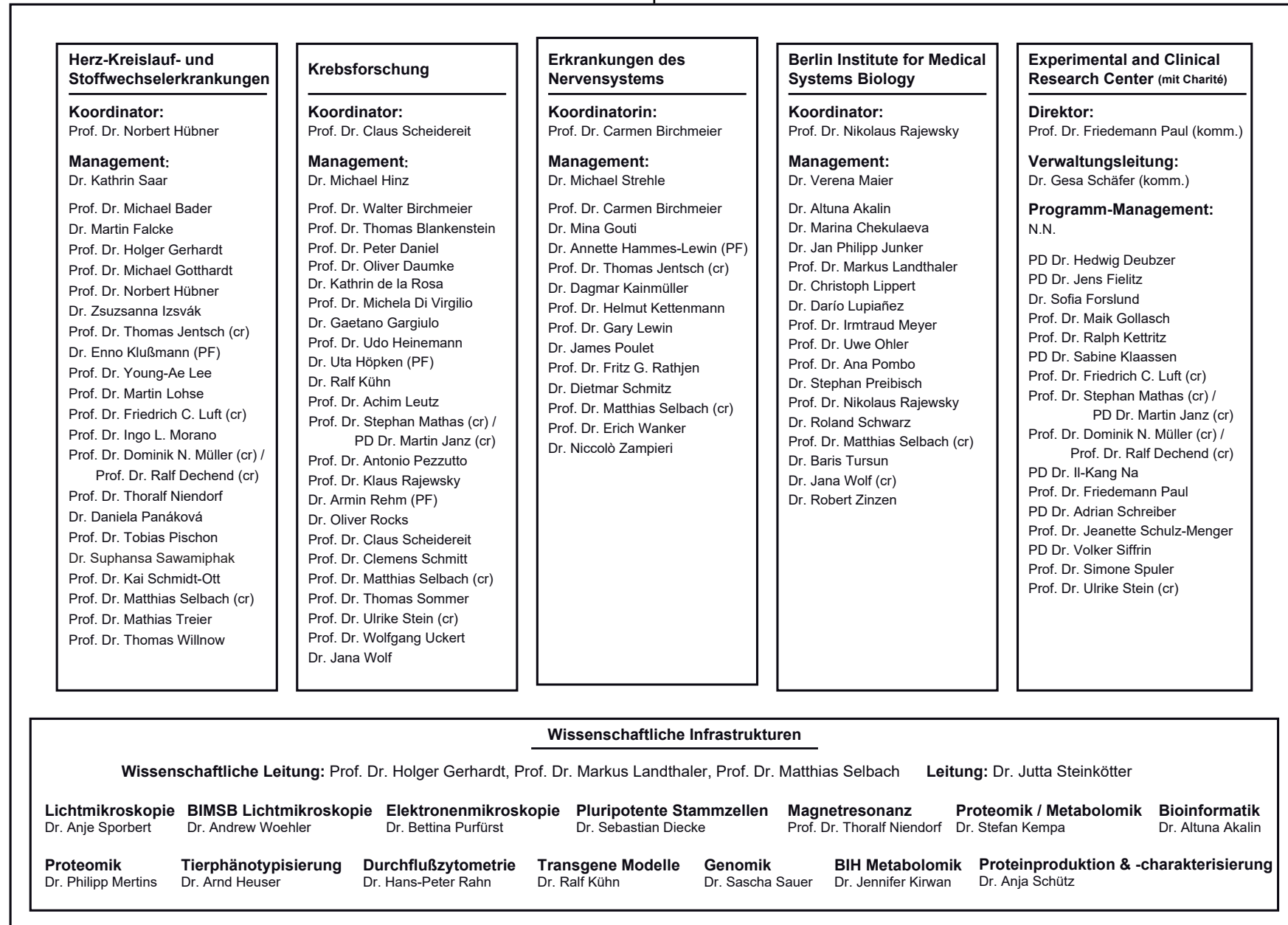
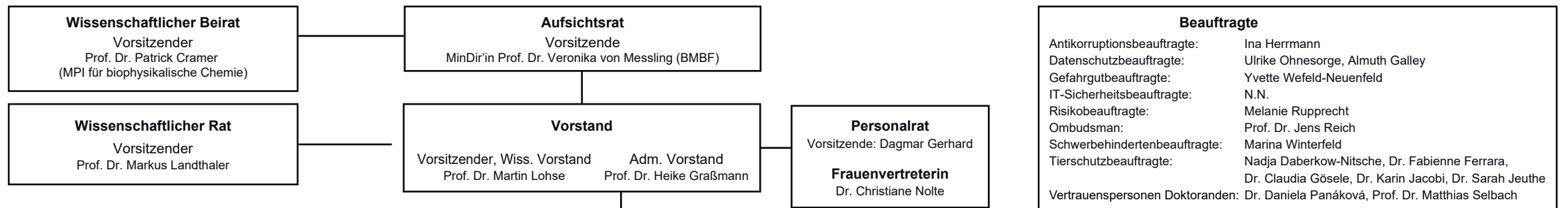


Organisationsplan des MAX-DELBRÜCK-CENTRUMS FÜR MOLEKULARE MEDIZIN in der Helmholtz Gemeinschaft

Körperschaft des öffentlichen Rechts



Legende
cr = Cross-Referenz
PF = Permanent Fellow

Postanschrift: Robert-Rössle-Strasse 10, D-13125, Berlin

Stand: November 2018
www.mdc-berlin.de/organigramm-D